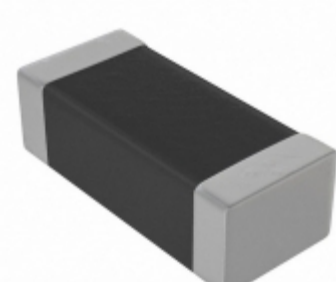


CC1808JKNPODBN221



Innovative Service Around the Globe. **YAGEO**

Part Number: [CC1808JKNPODBN221](#)
Manufacturer: [Yageo](#)
Description: CAP CER 220PF 2KV NPO 1808
Data sheet: [CC Series, NPO/X7R, 1KV to 3KV](#)

RoHS Status: Lead free / RoHS Compliant
Ship From: Hong Kong
Shipment Way: DHL/Fedex/TNT/UPS/EMS

Images are for reference only.
 See Product Specifications for product details.
 Buy **CC1808JKNPODBN221** with confidence from
 Component-World.HK, 1 Year Warranty

[Request For Quotation](#)

PRODUCT PARAMETER

Part Number	CC1808JKNPODBN221	Manufacturer	Yageo
Description	CAP CER 220PF 2KV NPO 1808	Lead Free Status / RoHS Status	Lead free / RoHS Compliant
Quantity Available	255712 pcs	Data sheet	CC Series, NPO/X7R, 1KV to 3KV
Category	Capacitors	Voltage - Rated	2000V (2kV)
Tolerance	±5%	Thickness (Max)	0.057" (1.45mm)
Temperature Coefficient	C0G, NP0	Size / Dimension	0.177" L x 0.079" W (4.50mm x 2.00mm)
Series	CC	Ratings	-
Packaging	Tape & Reel (TR)	Package / Case	1808 (4520 Metric)
Other Names	311-4532-2 CC1808JKNPODBN221-ND	Operating Temperature	-55°C ~ 125°C
Mounting Type	Surface Mount, MLCC	Moisture Sensitivity Level (MSL)	1 (Unlimited)
Manufacturer Standard Lead Time	36 Weeks	Lead Style	-
Lead Spacing	-	Lead Free Status / RoHS Status	Lead free / RoHS Compliant
Height - Seated (Max)	-	Features	High Voltage
Failure Rate	-	Detailed Description	220pF ±5% 2000V (2kV) Ceramic Capacitor C0G, NP0 1808 (4520 Metric)
Capacitance	220pF	Applications	General Purpose

Component-World.com is a Reliable Stocking Distributor of Electronic Components. We specialize in all Yageo series electronic components. We have 255712 pieces of Yageo CC1808JKNPODBN221 in stock available now. Request a quote from electronics components distributor at Component-World.com, our sales team will contact you within 24 hours.
 RFQ Email: info@Components-World.com

RELATED PRODUCTS

	Part#: CC1808JKNPOEBN330 Description: CAP CER 33PF 3KV NPO 1808	Manufacturers: Yageo	RFQ
	Part#: CC1808JKNPOCBN471 Description: CAP CER 470PF 1KV NPO 1808	Manufacturers: Yageo	RFQ
	Part#: CC18/4SA240 Description: RLY CONT 4P 240V 50/60HZ NO AUX	Manufacturers: Carlo Gavazzi	RFQ
	Part#: CC1808JKNPOEBN150 Description: CAP CER 15PF 3KV NPO 1808	Manufacturers: Yageo	RFQ
	Part#: CC1808JKNPOEBN470 Description: CAP CER 47PF 3KV NPO 1808	Manufacturers: Yageo	RFQ
	Part#: CC18/4SA24 Description: RLY CONT 4P 24V 50/60HZ NO AUX	Manufacturers: Carlo Gavazzi	RFQ
	Part#: CC1808JKNPOEBN101 Description: CAP CER 100PF 3KV NPO 1808	Manufacturers: Yageo	RFQ
	Part#: CC18/4SA480-60HZ Description: RLY CONT 4P 480V 60HZ NO AUX	Manufacturers: Carlo Gavazzi	RFQ
	Part#: CC1808JKNPOEBN270 Description: CAP CER 27PF 3KV NPO 1808	Manufacturers: Yageo	RFQ
	Part#: CC1808JKNPOEBN221 Description: CAP CER 220PF 3KV NPO 1808	Manufacturers: Yageo	RFQ
	Part#: CC1808JKNPOEBN220 Description: CAP CER 22PF 3KV NPO 1808	Manufacturers: Yageo	RFQ
	Part#: CC1808JKNPOCBN470 Description: CAP CER 47PF 1KV NPO 1808	Manufacturers: Yageo	RFQ
	Part#: CC18/4SA208-60HZ Description: RLY CONT 4P 208V 60HZ NO AUX	Manufacturers: Carlo Gavazzi	RFQ
	Part#: CC18/4SA600-60HZ Description: RLY CONT 4P 600V 60HZ NO AUX	Manufacturers: Carlo Gavazzi	RFQ
	Part#: CC18/4SA120 Description: 4P CONT S 120V 50/60HZ NO AUX	Manufacturers: Carlo Gavazzi	RFQ
	Part#: CC1808JKNPOEBN680 Description: CAP CER 68PF 3KV NPO 1808	Manufacturers: Yageo	RFQ
	Part#: CC1808JKNPOEBN180 Description: CAP CER 18PF 3KV NPO 1808	Manufacturers: Yageo	RFQ
	Part#: CC18/4SD24 Description: RLY CONT 4P 24V DC NO AUX	Manufacturers: Carlo Gavazzi	RFQ
	Part#: CC1808JKNPOEBN100 Description: CAP CER 10PF 3KV NPO 1808	Manufacturers: Yageo	RFQ
	Part#: CC18/4SA220 Description: RLY CONT 4P 220V 50/60HZ NO AUX	Manufacturers: Carlo Gavazzi	RFQ

Related keywords for CC1808JKNPODBN221

Yageo CC1808JKNPODBN221	CC1808JKNPODBN221 distributor	CC1808JKNPODBN221 supplier	CC1808JKNPODBN221 price
CC1808JKNPODBN221 download datasheet	CC1808JKNPODBN221 datasheet	CC1808JKNPODBN221 stock	buy CC1808JKNPODBN221
Yageo CC1808JKNPODBN221	YAGEO Corporation CC1808JKNPODBN221		